

ADLIS

SMART BENCH
SMART CONTAINER
SMART HOME
SMART SECURITY

WEIYIN

TECHNOLOGY

DATA SHEET: WYB2006

Stainless steel #304
Weather resistant
Special quality control



Trash compression
Filling level display



Solar energy




Automatic door
Disinfection
Advertising display
LED light



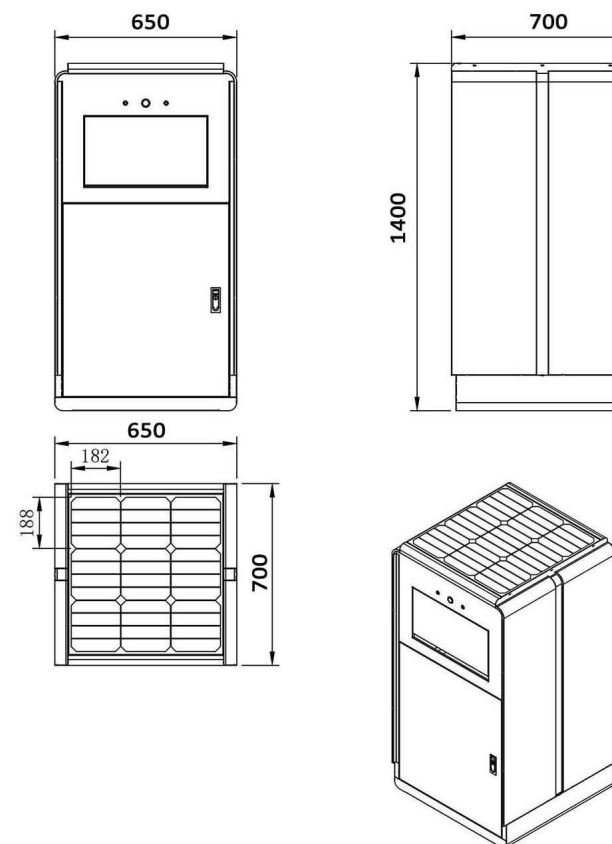
Remote control
GPS
Filled Alarm
Vandalism Alarm
Malfunction Alarm
Fire Alarm

Characteristics

Model	WYB2006	Appearance	
Size	L65*W70*H140cm		
G.W.	85kg(estimated)		
Certificate	CE ISO9001,14001, IP65		
Material	Main material- Stainless steel #304 -1.5mm thick-powder coating Waste Aperture- Stainless steel #304 -2.0mm thick-powder coating, 400*262mm		
Capacity	120L inner bin with wheels		
Solar panel	Monocrystalline silicon, 67W		
Controller	MPPT		
Battery	LiFePO4 battery, 12V/55AH		
Ashtray	An integrated cigarette extinguishing plate and cigarette receptacle on the side		
Touch-free Operation	Waste aperture flap with motion sensor, automatically opening when hand nearby Foot pedal accessible to persons with special abilities, including wheel-chair users		
Compression	When the trash is full, the compactor will work one time automatically, after 5 seconds, the filling level sensor will detect the trash again and continue to compress until the trash is not full.		
Compaction Ratio	>8:1 (for general waste other than plastic bottles or metal cans)		
Compaction Force	> 5000N		
Safety Control	The compactor autmatically stops working when the doors are opened The compression mechanism is closed in metal box, inaccessible to users		
User Feedback	An mini display on front of the bin, indicating the bin's current fullness level		
LED indicator light	When the trash is full, green indicator light turns to red color. When waste aperture flap opens, green indicator light turns to red color.		
Illumination	LED strip light on front of the bin, working automatically in the evening.		
Jam Detection	The unit includes a sensor that automatically sends an alert to the management system if the waste aperture becomes jammed.		
Vandalism Mitigation	With extra layer of tempered glass on top to prevent solar panel from vandalism		
Front door	The front service door is secured with a robust key and can be opened with a sepcial key, then the inner bin can be taken out to clean the garbage.		
Voice broadcast	"The door is opening" "The door is closing, watch your hand."		
Disinfection	UV light automatically turns on when the trash is full.		
Energy-saving system	During winter or rainy days, when the battery is of low voltage, all functions automatically stop working except the waste aperture flap		

Option: Management cloud platform

- Real-Time Monitoring:
 - Provide real-time fault conditions and corresponding service codes.
 - Detect and report waste aperture jams and other operational malfunctions.
 - Indicate real-time receptacle fill levels (e.g., 25% full).
 - Indicate real-time battery status, including percentage of charge.
- Data and Analytics:
 - Offer a map-based visualization displaying each unit's geographical location and current fullness level.
 - Allow for historical data analysis across the entire fleet or for individually selected units.
 - Be capable of exporting all collected data in open-standard file formats.
- Operations Management:
 - Log all data related to maintenance visits and service interventions.



A. Description and function:

The Adlis Solar Smart Bin works with solar power, with automatic sensor opening door and compactor. Compression proportion is 2:1 for kitchen waste.

B. Intended use:



This product is intended for outdoor use only. Please place it on a flat floor and away from any shade. If in the shade, the solar panel will not function effectively.

C. Package Content:

1pc Adlis Solar Smart Bin

1set Expansion Bolt

D. Consignes de sécurité:



ATTENTION!

We recommend that a qualified person use it to assemble and disassemble the product to avoid any risk of product deterioration.

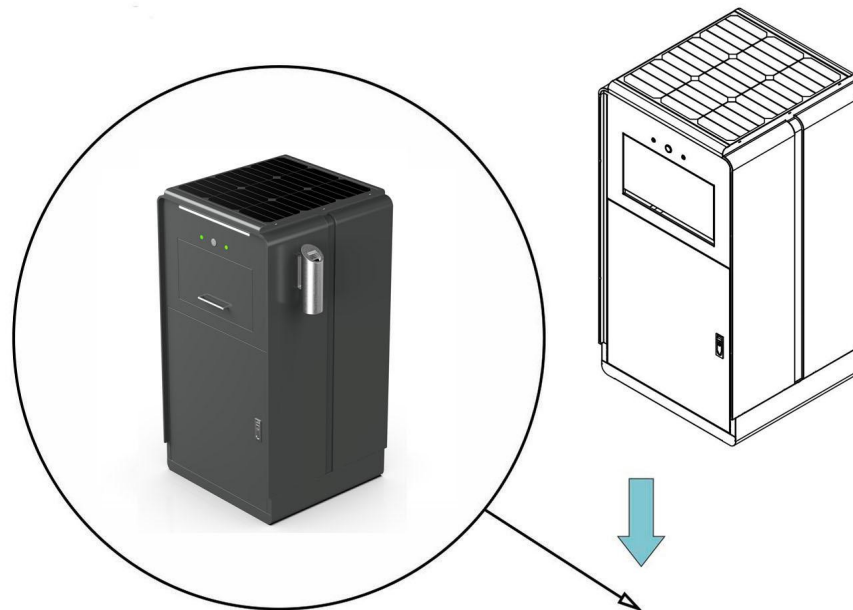
The product is self-service, that is, users do not need help to charge their device.

Read carefully and follow the safety instructions for care, maintenance, storage and transport.

We recommend using the original packaging for transportation to protect the product from dust and moisture.

- We are not responsible for damage to persons or property caused by improper installation or operation not described in this guide. Any alteration and / or modification of the product or its accessories immediately voids the warranty.

E. Connexion et fonctionnement:



F. Care, maintenance, storage and transport:



WARNING!

We recommend that a qualified person use it to assemble and disassemble the product to avoid any risk of product deterioration.

- We grant a conditional warranty of 2 year for this device from the purchase data.
- The warranty also does not cover accidental damage or vandalism caused to the product.
- We are not responsible for damage to persons or property caused by improper installation or operation not described in this guide. Any alteration and / or modification of the product or its accessories immediately voids the warranty.





Brands and Numbers	Property Description	UNITS	UNITS/ CTN	CTNS	G.W.(kgs)	N.W.(kgs)	MEAS (CM)
	SMART BIN WYB2006	1	1	1	85	70	80*80*150
Total		1	1	1	85	70	0.96CBM



REMARKS: ALL PRODUCTS ARE PACKED IN PLYWOOD BOXES.

This packing detail is for 1pc sample, for bulk order the detailed packing details will be provided before shipment.

ADLIS

WEIYIN

**We Don't Make The Future,
We Make The Future Better**

**Adlis Smart / Weiyin
Technology Co.,Ltd**

<https://www.adlissmart.com/>
<https://www.adlis.co.il/>
<https://www.adlis.co.il/Marketing/>
<https://www.adlis.co.il/SmartBench/>
<https://www.solarbenchchina.com/>

W E I Y I N

WEIYIN TECH.

Jane Wu

Chief Business Development smart Furniture
sales@solarbenchchina.com
0086 13823126631

ADLIS SMART

Gad Levi

Architect/engineer Smart Container
gad@adlis.co.il
972(0) 548462648

Asaraf Doron

Chief Business & Delop. Israel Market
doron@adlis.co.il
972(0) 544260468

Yoni Osher

Chief Business Development smart Furniture
yonit@adlis.co.il
972(0)523553094

Herman Spak

Commercial Marketing manager
herman@adlis.co.il
972(0) 506927918

Nicolas Senerman

Commercial Marketing Sud America
nicolas@adlis.co.il
972(0) 584967961

Rami Einav

Commercial Director Smart Home
rami@adlis.co.il
972(0) 506206688

A

D

L

I

S

.

ADLIS SMART

Aaron donadey
CEO of Vpl-production Ltd
Adlis Smart Department
aaron@adlis.co.il

WEIYIN TECH.

Chun Sheng Hu
CEO of WEIYIN
008613823601807